



**GOLDEN
PAINTS**

Architecture Paints

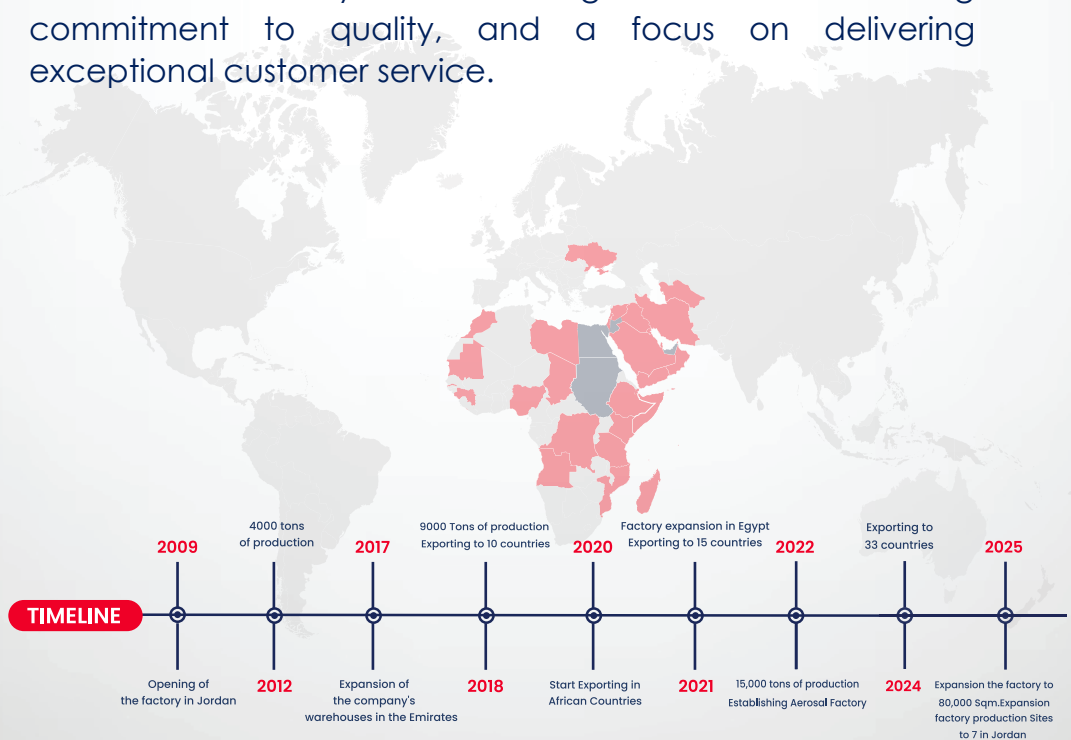
PRODUCT CATALOGUE



**GOLDEN
PAINTS**

ABOUT US

Golden Paints was established in Jordan in 2009 and is a leading manufacturer of high-quality paints and coatings. With over **30 years** of industry experience. Operating on facility **100,000 square meters**, the company specializes in the production of automotive, architectural, wood, industrial and solvent and powder coatings. With an annual production capacity of nearly **20,000 tons**, **Golden Paints** exports to over **33 countries** across the World. The company has established itself as an industry leader through innovation, a strong commitment to quality, and a focus on delivering exceptional customer service.

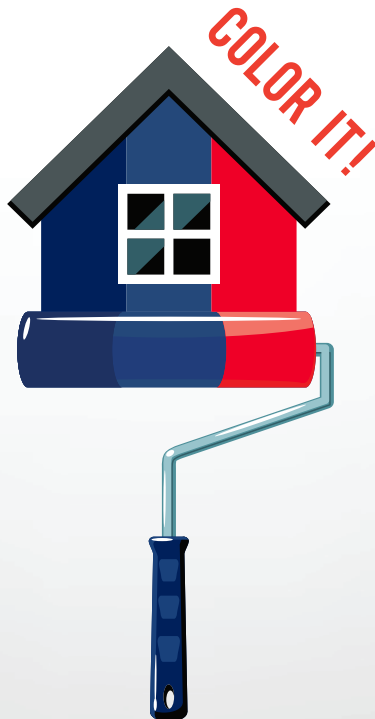




**GOLDEN
PAINTS**

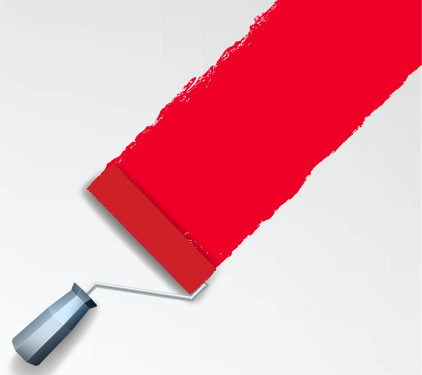
ABOUT US

Golden Paints offers a complete architectural and decorative coating system that covers every stage of surface work – from primers and surface preparation, through interior and exterior paints and finishing coats, to colorants and tinting systems, epoxy flooring, and special decorative coatings. Each product is designed to work as part of an integrated system to ensure properly prepared substrates, excellent coverage, good color stability, and long-term protection with a finish that matches the requirements of residential, commercial, and light industrial projects.





**GOLDEN
PAINTS**



Primer & Surface Preparation :

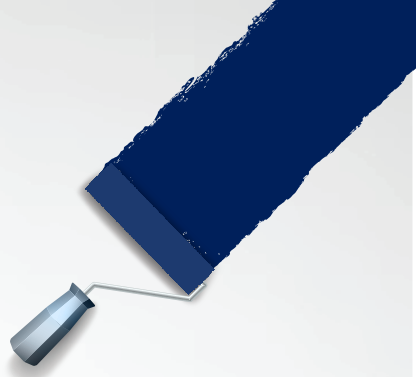
Wall Putty :

used to level interior walls and ceilings before painting. It fills hairline cracks, small holes, and minor undulations in plaster or gypsum surfaces, creating a smooth and uniform substrate that improves the appearance of subsequent paint coats and reduces consumption.





**GOLDEN
PAINTS**



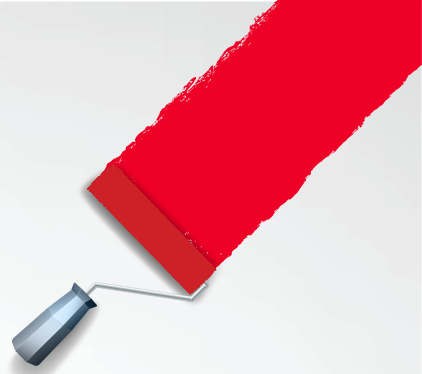
Fill Joint:

Joint filler designed for filling gaps, joints, and cracks between boards or concrete/blocks. It is used to create a single, continuous surface and to reduce the reappearance of joint lines or cracks after painting, especially at transitions between different materials.





**GOLDEN
PAINTS**



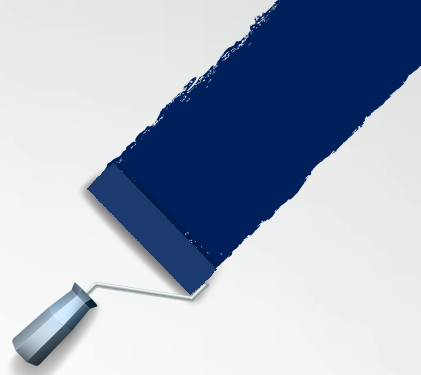
Extra 200 Bonding Sealer:

A high-quality bonding sealer for highly absorbent substrates such as plaster, concrete, and render. It closes surface pores, reduces excessive absorption, improves adhesion of subsequent emulsion coats, and helps achieve more uniform color while lowering topcoat consumption.





**GOLDEN
PAINTS**



Bonding Sealer :

A combined bonding sealer and undercoat that acts as a bridge between the prepared substrate (or putty) and the finishing coats. It equalizes absorption and helps hide minor variations in color or texture, resulting in a smoother and more uniform final finish.





**GOLDEN
PAINTS**



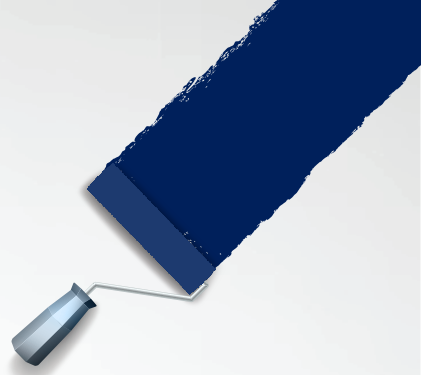
Undercoat Water Based:

Water-based undercoat used beneath interior water-based finishes. It has low odor, fast drying, and is easy to sand. It helps uniform the surface and improves the coverage and hiding power of emulsion topcoats, reducing the number of coats required.





**GOLDEN
PAINTS**



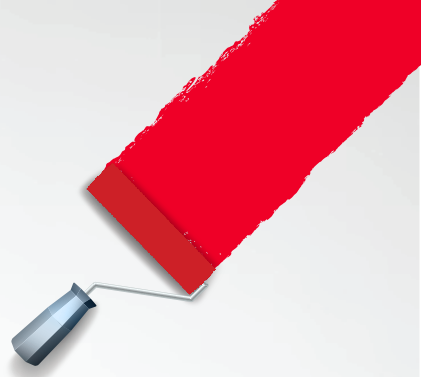
Undercoat Alkyd:

Alkyd-based undercoat typically used under alkyd enamels on wood or metal. It provides good filling power, hides minor surface imperfections, and prepares the substrate for a strong, durable matte finish.





**GOLDEN
PAINTS**



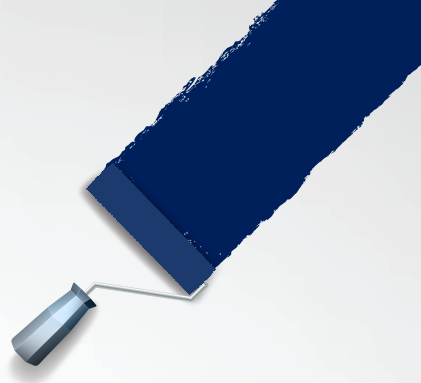
SBR:

Styrene-Butadiene Rubber (SBR) used as a bonding agent and additive in cementitious mortars and surface preparation systems. It improves adhesion between old and new concrete, increases flexibility, reduces cracking, and can enhance resistance to moisture when used as part of an appropriate system.





**GOLDEN
PAINTS**



Interior Paints :

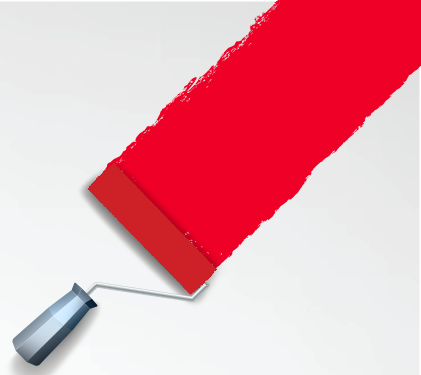
Emulsion Prime:

An economical interior emulsion used as a first coat (primer coat) on walls and ceilings. It helps regulate absorption and improve adhesion of higher-performance topcoats applied over it, serving as an important preparatory step in interior systems.





**GOLDEN
PAINTS**



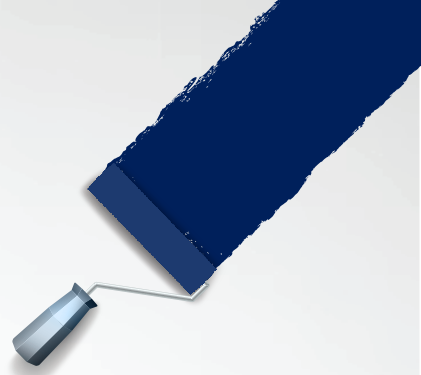
Emulsion GP-050:

A general-purpose interior emulsion that offers better coverage and appearance than purely economic grades. It provides a balanced solution between quality and cost, suitable for apartments, offices, and schools.



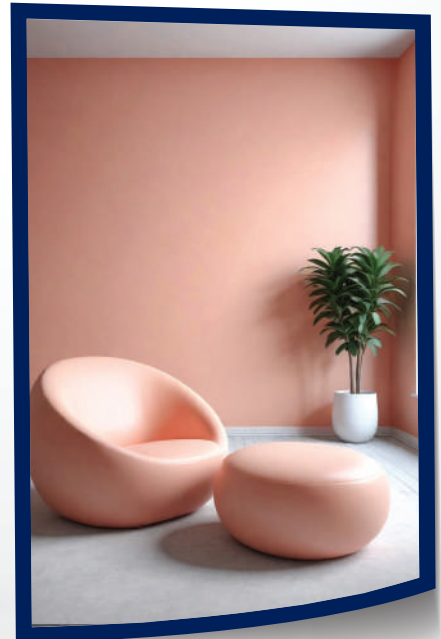


**GOLDEN
PAINTS**



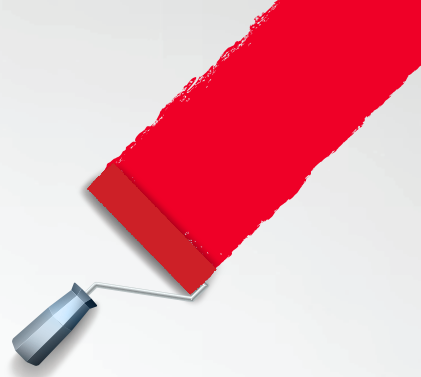
Emulsion Extra 200:

An enhanced interior emulsion with higher hiding power and better durability. It helps conceal minor surface defects and maintains color stability for longer, making it a good choice for living rooms, corridors, and frequently used areas.



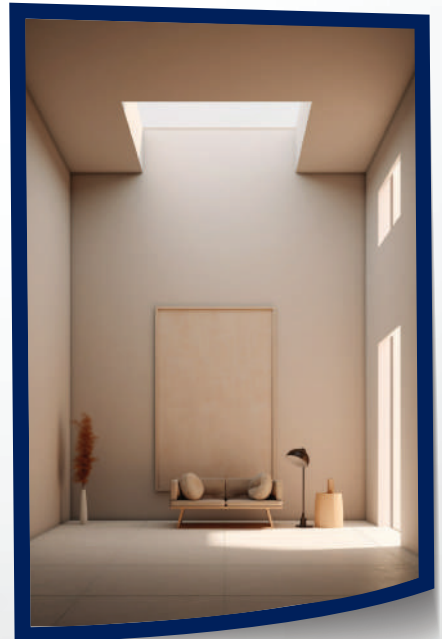


**GOLDEN
PAINTS**



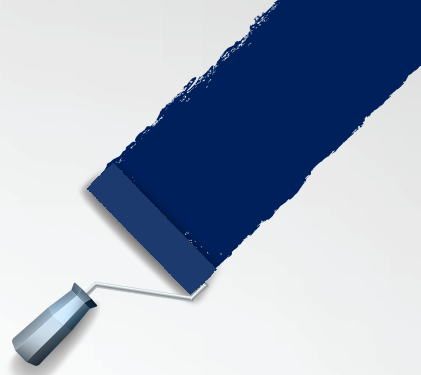
Emulsion Super Cryl:

A durable interior acrylic emulsion with excellent coverage and high washability. It features anti-fungal properties to help protect walls from mold and mildew, along with good color stability. It is suitable for living areas, busy corridors, and offices that require an attractive finish with the possibility of regular cleaning.





**GOLDEN
PAINTS**



Emulsion Zero:

A high-quality interior emulsion paint with a zero matt, completely flat finish that gives walls a smooth and elegant appearance with no shine. The zero matt finish helps reduce light reflection and minimize the appearance of minor surface imperfections, making it ideal for spaces that require a calm, uniform, and refined matt look.



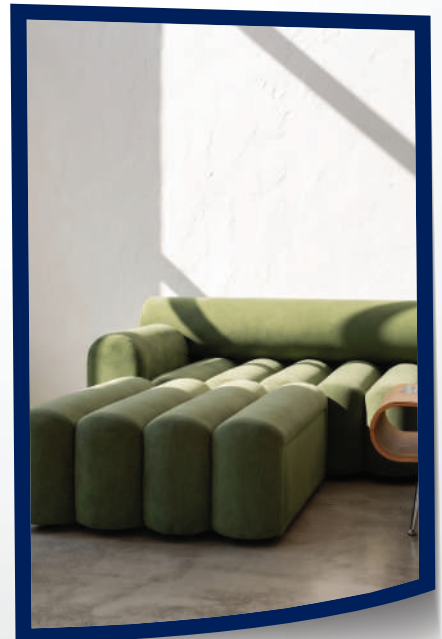


**GOLDEN
PAINTS**



Emulsion Super Cryl Matt:

A high-quality interior acrylic matt emulsion that delivers a smooth, non-reflective finish and minimizes the visibility of wall imperfections. It offers anti-fungal protection and excellent washability, making it ideal for modern interiors, bedrooms, and premium spaces where a clean, elegant matt look is preferred.



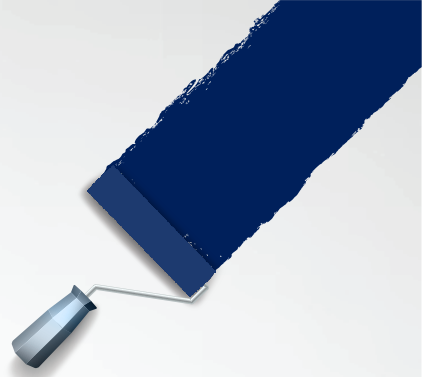


**GOLDEN
PAINTS**

Finish Coats :

Eggshell:

An interior finishing paint with a semi-gloss eggshell finish, positioned between matt and semi-gloss. It provides an elegant look with better cleanability than full matt paints, making it suitable for living rooms, corridors, and offices.



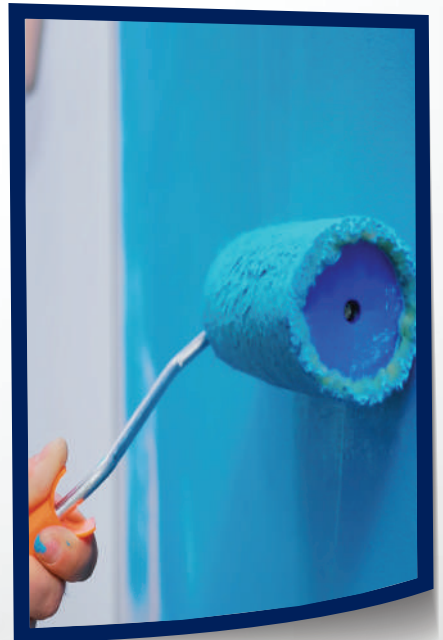


**GOLDEN
PAINTS**



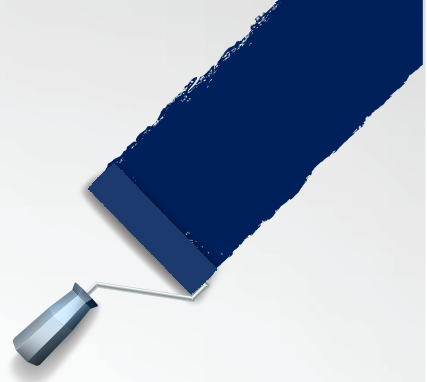
Vinyl Silk:

A smooth interior finishing coat with a silky finish and very soft surface. It offers high washability and improved resistance to dirt, ideal for hotels, reception areas, and premium office spaces where a refined appearance and frequent cleaning are required.





**GOLDEN
PAINTS**



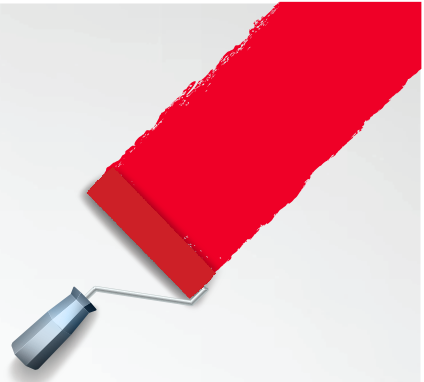
Exterior Paints :

A textured coating for exterior or interior use that creates a patterned or slightly rough surface instead of a flat smooth finish. It helps hide surface defects such as minor waves and hairline cracks and gives facades a distinctive decorative appearance.





**GOLDEN
PAINTS**



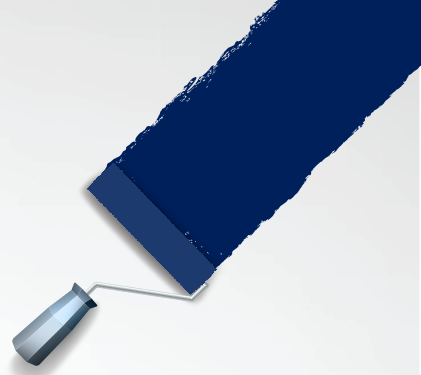
Roof Coating:

A protective coating formulated for building roofs. It forms a barrier against weather conditions such as sun, rain, and moisture, helping to extend the life of the concrete roof and reduce water ingress when used as part of a suitable system.



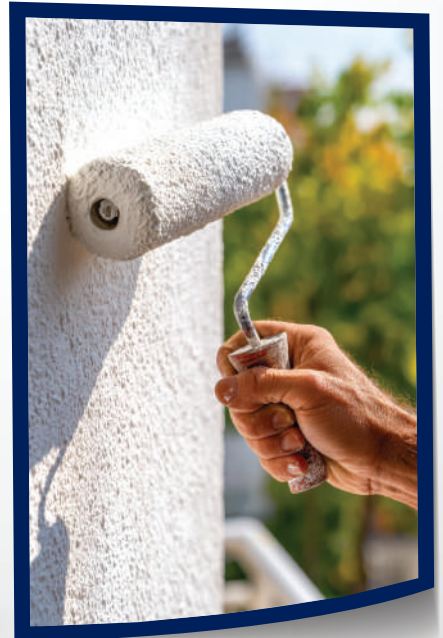


**GOLDEN
PAINTS**



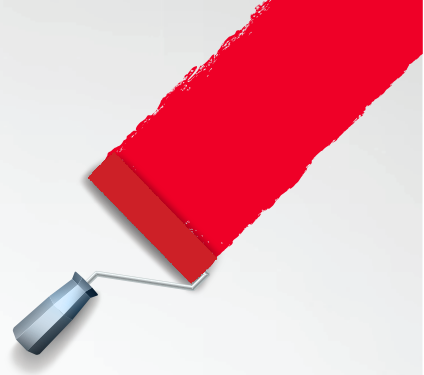
Gold Shield:

A high-quality exterior paint for building facades, offering good resistance to UV radiation and flaking, with improved color stability over time. It provides a balance between protective performance and an attractive decorative appearance for exterior walls.





**GOLDEN
PAINTS**



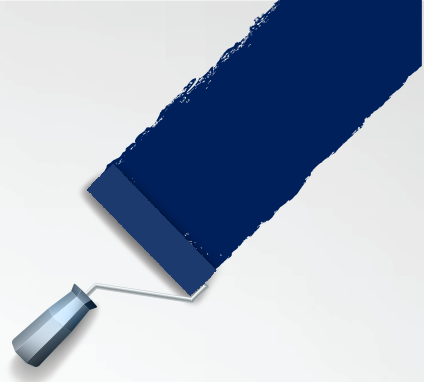
Road Marking:

A specialized coating for road markings and ground lines on asphalt or concrete. It dries quickly and withstands traffic and abrasion, and can be combined with reflective beads for enhanced visibility, according to system requirements.





**GOLDEN
PAINTS**



Bitumen:

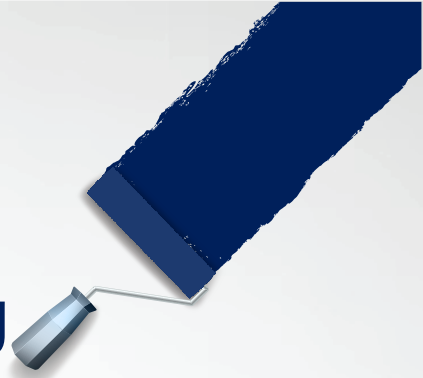
Bituminous coating used as a protective and waterproofing layer on metal or concrete surfaces exposed to soil or moisture. It is typically used as part of waterproofing systems below ground level or on structural elements sensitive to damp conditions.





**GOLDEN
PAINTS**

Colorants & Tinting System (Bases A, B, C):



Emulsion (Tinting Base):

A specially formulated emulsion base for use in tinting machines. It is designed to receive colorants and produce a wide range of interior emulsion shades while maintaining the original performance of the product.





**GOLDEN
PAINTS**



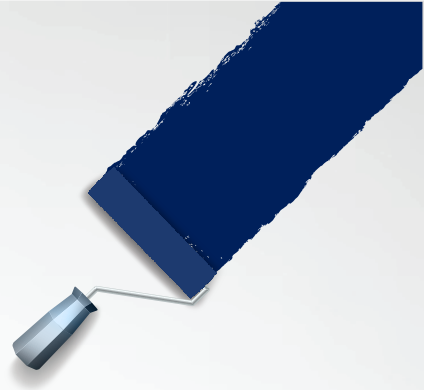
Eggshell (Tinting Base):

An eggshell base suitable for tinting, allowing the production of multiple eggshell colors through the tinting system, with the same sheen level and cleanability as the clear base.



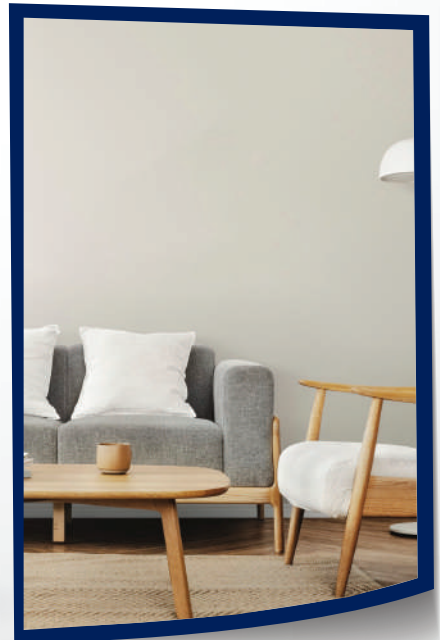


**GOLDEN
PAINTS**



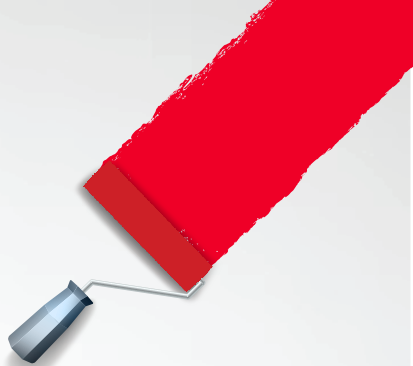
Vinyl Silk (Tinting Base):

A vinyl silk base for tinting, used to generate a range of silky-finish colors with the same smooth texture and washability as the original vinyl silk product.





**GOLDEN
PAINTS**



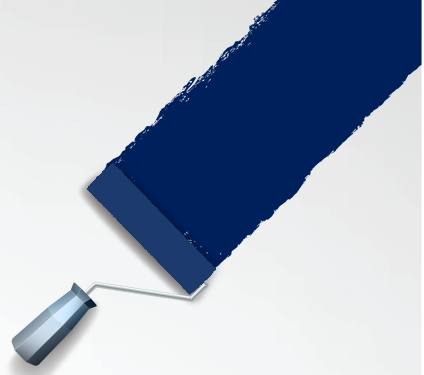
Gold Shield (Tinting Base):

An exterior Gold Shield base designed for tinting, enabling the production of facade colors with high weather resistance while preserving the protective performance of the Gold Shield system.



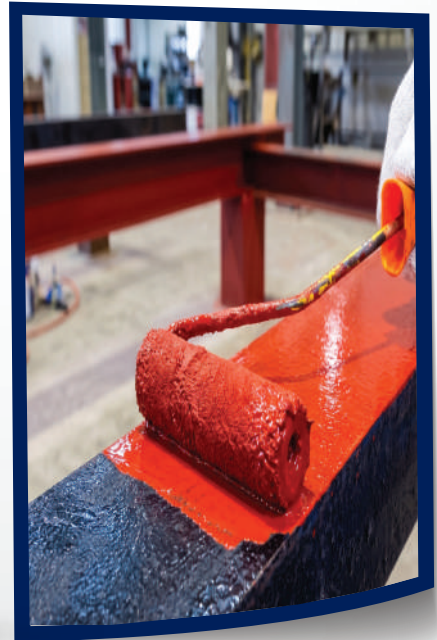


**GOLDEN
PAINTS**



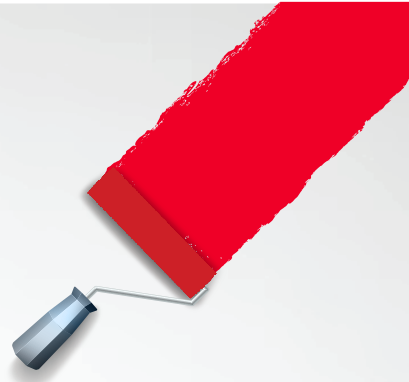
Enamel Gloss (Base):

A tintable alkyd gloss base used to produce glossy enamel colors for wooden and metal surfaces. It maintains the hardness, gloss, and durability typical of alkyd systems.





**GOLDEN
PAINTS**



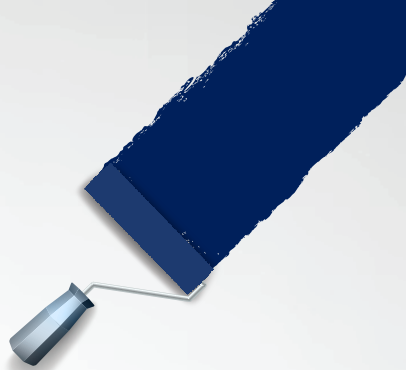
Enamel Matt (Base):

A tintable alkyd matt base that delivers fully colored matt enamels with the mechanical strength and resistance of alkyd paints, suitable for surfaces where a matt look with high durability is required.



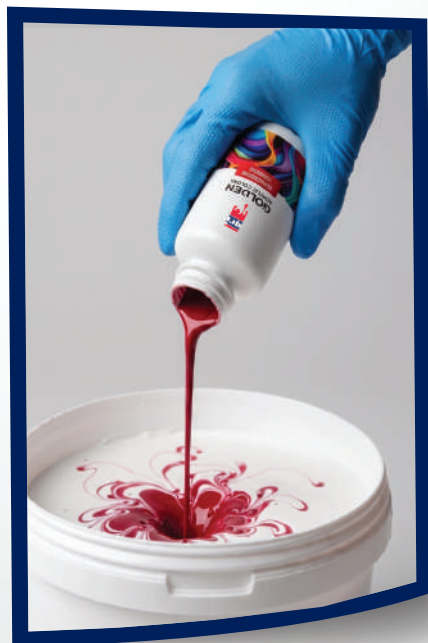


**GOLDEN
PAINTS**



Universal Colorant:

High-strength universal colorants used in controlled doses with bases (A, B, C) in the tinting system. They offer strong tinting power and good color stability, allowing a wide range of reproducible shades across different product families.



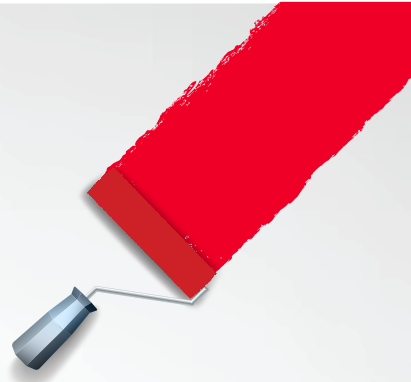


**GOLDEN
PAINTS**

Epoxy Flooring :

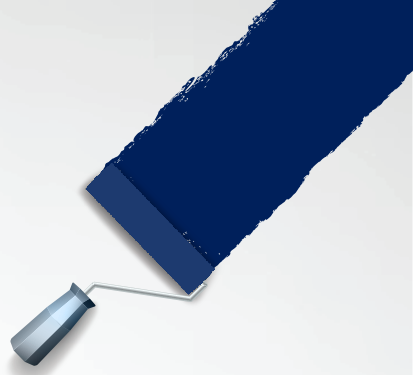
Epoxy Flooring Primer:

A two-component epoxy primer for concrete floors. It penetrates and consolidates the substrate, improving adhesion between the concrete and the self-leveling epoxy layer, reducing absorption and helping to prevent pinholes and bubbles in the final coating





**GOLDEN
PAINTS**



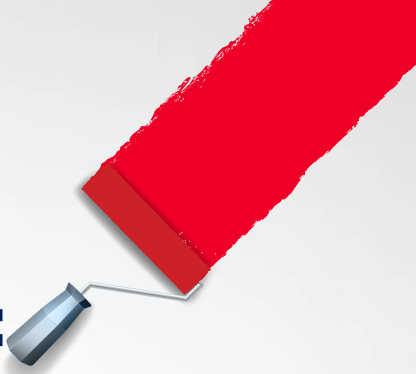
Epoxy Flooring Self Leveling:

A self-leveling epoxy flooring system that forms a seamless, smooth, and level surface with high resistance to abrasion, oils, and certain chemicals. It is suitable for light and medium industrial facilities, warehouses, garages, and showrooms that require durable and easy-to-clean floors.





**GOLDEN
PAINTS**



Decorative Coatings:

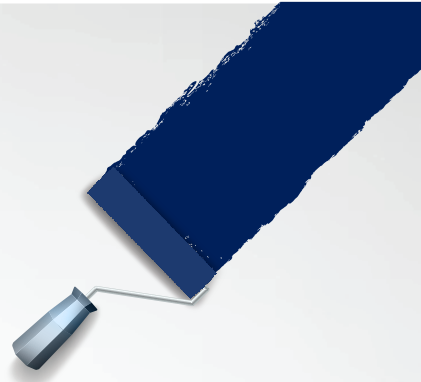
Crystal:

A decorative coating that creates a sparkling, crystal-like effect on walls, ideal for feature walls in living rooms, entrances, and retail spaces where a distinctive highlight is desired.





**GOLDEN
PAINTS**



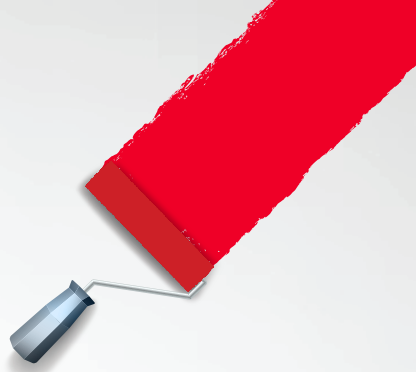
Vera:

An elegant decorative finish with soft shading effects that breaks the flat look of plain paint and adds gentle movement to the surface, suitable for upscale interiors and living areas.





**GOLDEN
PAINTS**



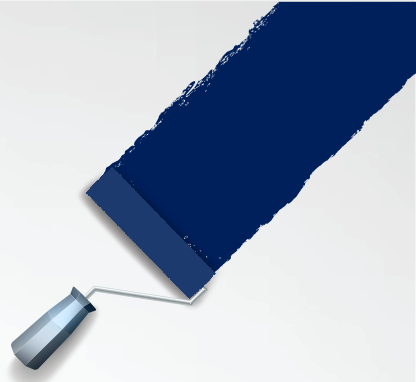
Baca:

A textured decorative coating that adds depth and character to walls. Depending on the application technique, it can produce classic or rustic effects, making it suitable for restaurants, cafés, and accent walls.



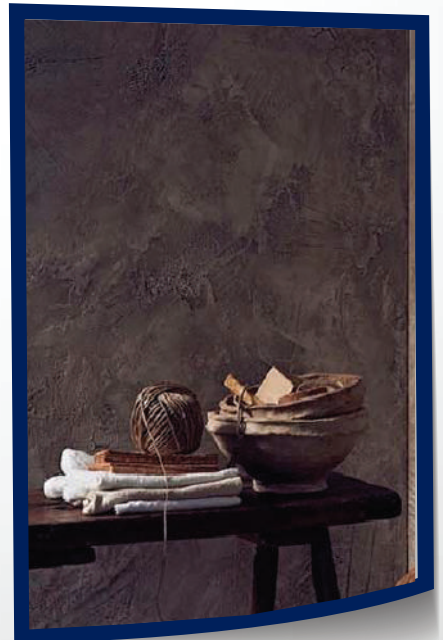


**GOLDEN
PAINTS**



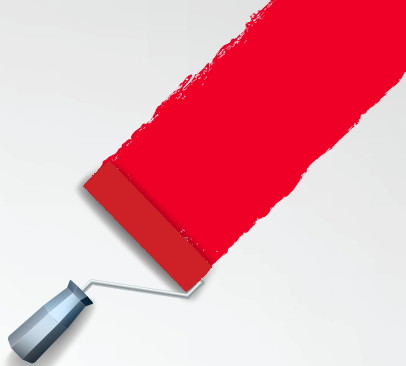
Ice:

A special decorative effect that gives a cool, frosted appearance with subtle light reflections, ideal for contemporary designs and spaces where a modern, differentiated look is required.





**GOLDEN
PAINTS**



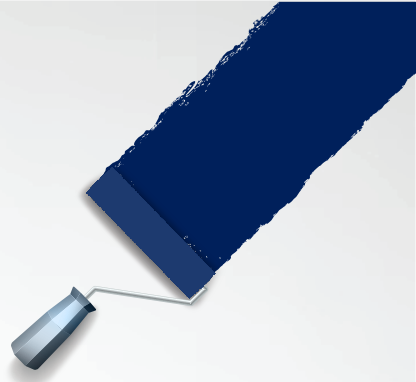
Novel:

A modern decorative finish that allows creative designs and multiple visual effects using different tools such as brushes, sponges, and special rollers. It offers designers wide freedom to express the identity of each interior space.





**GOLDEN
PAINTS**



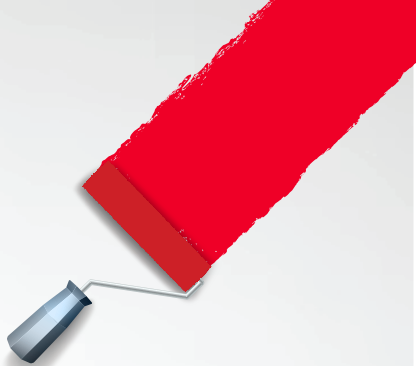
Caviar:

A luxury decorative coating with a rich, grainy 'caviar' texture that lends a premium, opulent feel to walls, suitable for hotels, villa entrances, and high-end offices.





**GOLDEN
PAINTS**



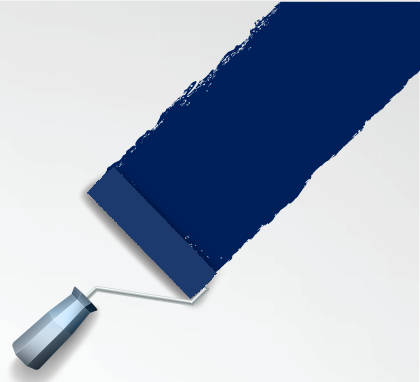
Glaze:

A transparent or semi-transparent decorative glaze applied over colored bases. It adds visual depth, shading, and special effects, and can be used to create antique finishes or soft shadow effects depending on the application technique.



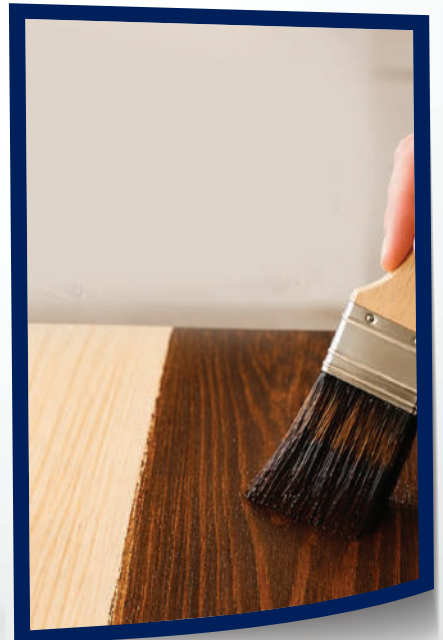


**GOLDEN
PAINTS**



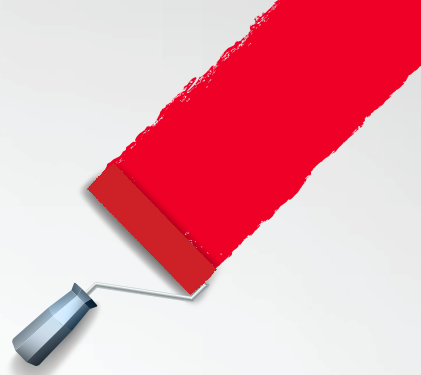
Wood Stain:

Alkyd wood stain used to color timber while highlighting the natural grain instead of hiding it. It provides a refined decorative appearance.





**GOLDEN
PAINTS**



Eggshell Colors:

A selected range of ready-made eggshell colors that combine the practical benefits of eggshell finishes (cleanability and soft sheen) with decorative shades suitable for interior feature walls and living spaces.





**GOLDEN
PAINTS**



QUALITY TILL LAST DROP

جودة حتى آخر قطرة



+962 658 111 50



+962 658 111 51



info@gcijo.com

www.gcipaint.com